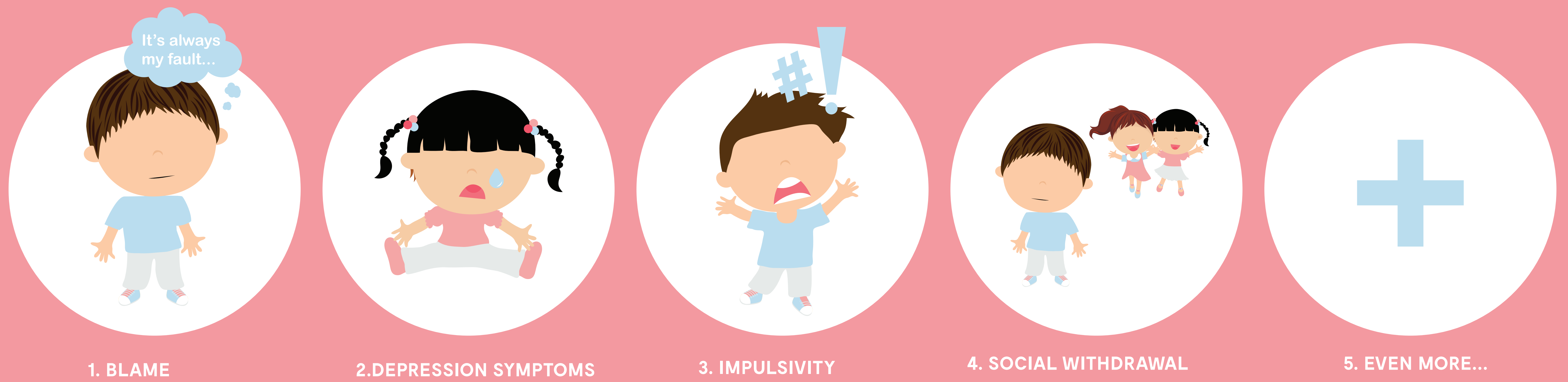


EMOTION REGULATION AND BEHAVIOR PROBLEMS IN CHILD VICTIMS OF SEXUAL ABUSE

Justine Caouette¹, Laetitia Mélissande Amédée¹, Martine Hébert Ph.D.^{1,2}

Département de psychologie, Université du Québec à Montréal¹, Département de sexologie, Université du Québec à Montréal²

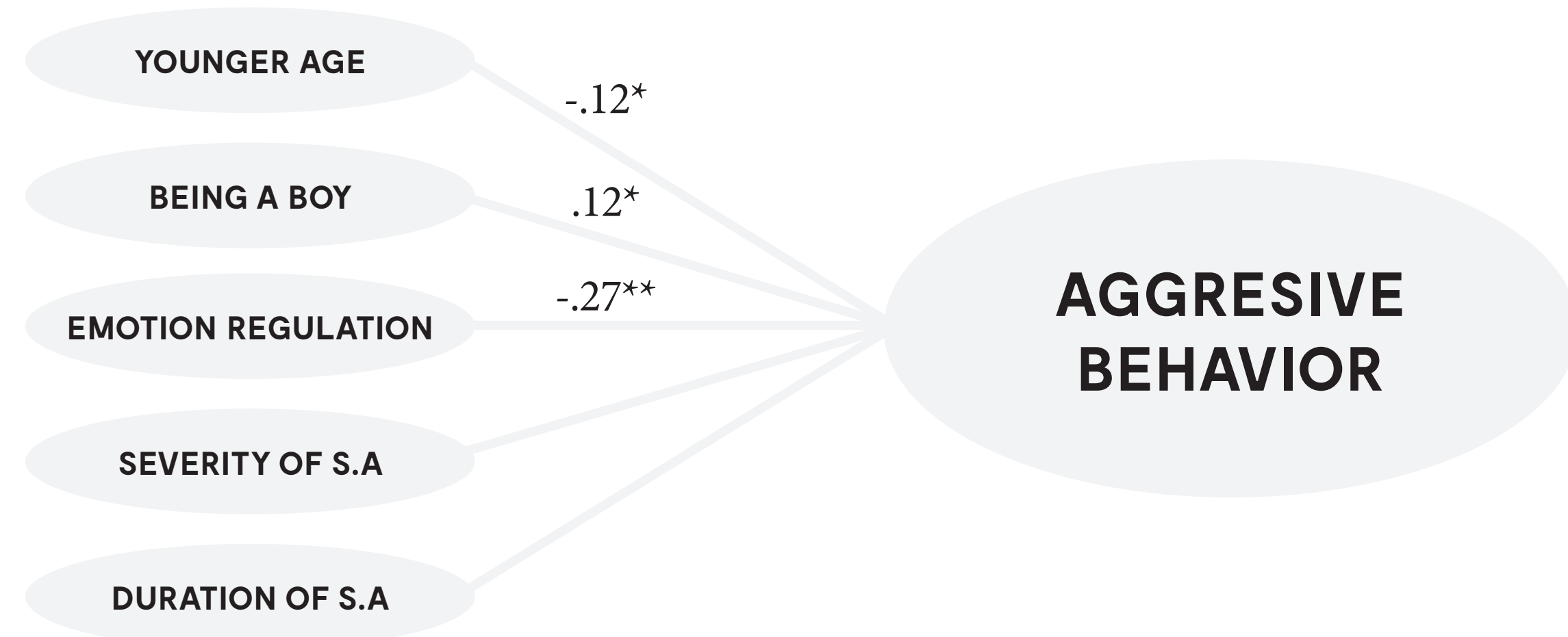
CHILD SEXUAL ABUSE IS ASSOCIATED WITH...



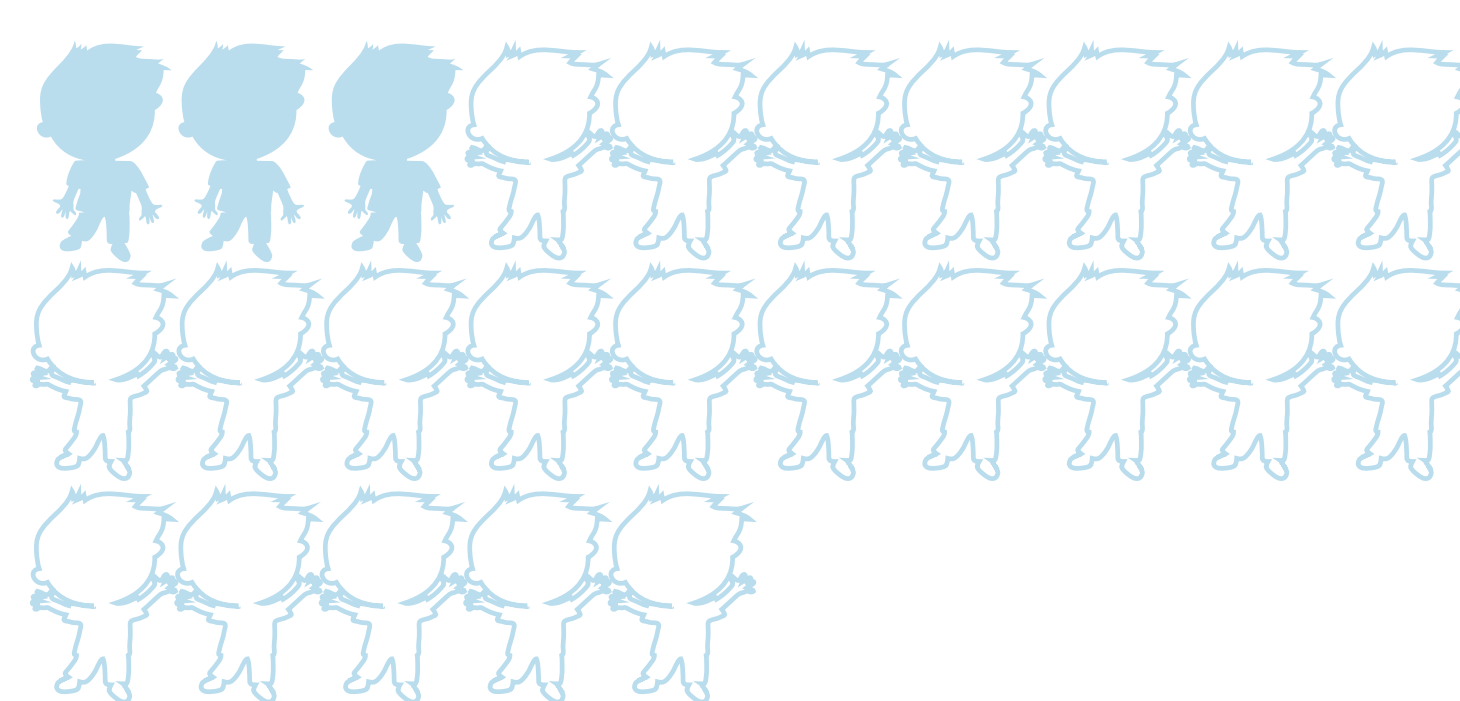
OBJECTIVES

This study aimed to highlight the negative consequences of child sexual abuse and explore the role of emotion regulation as a potential protective factor in school-aged children victims of sexual abuse.

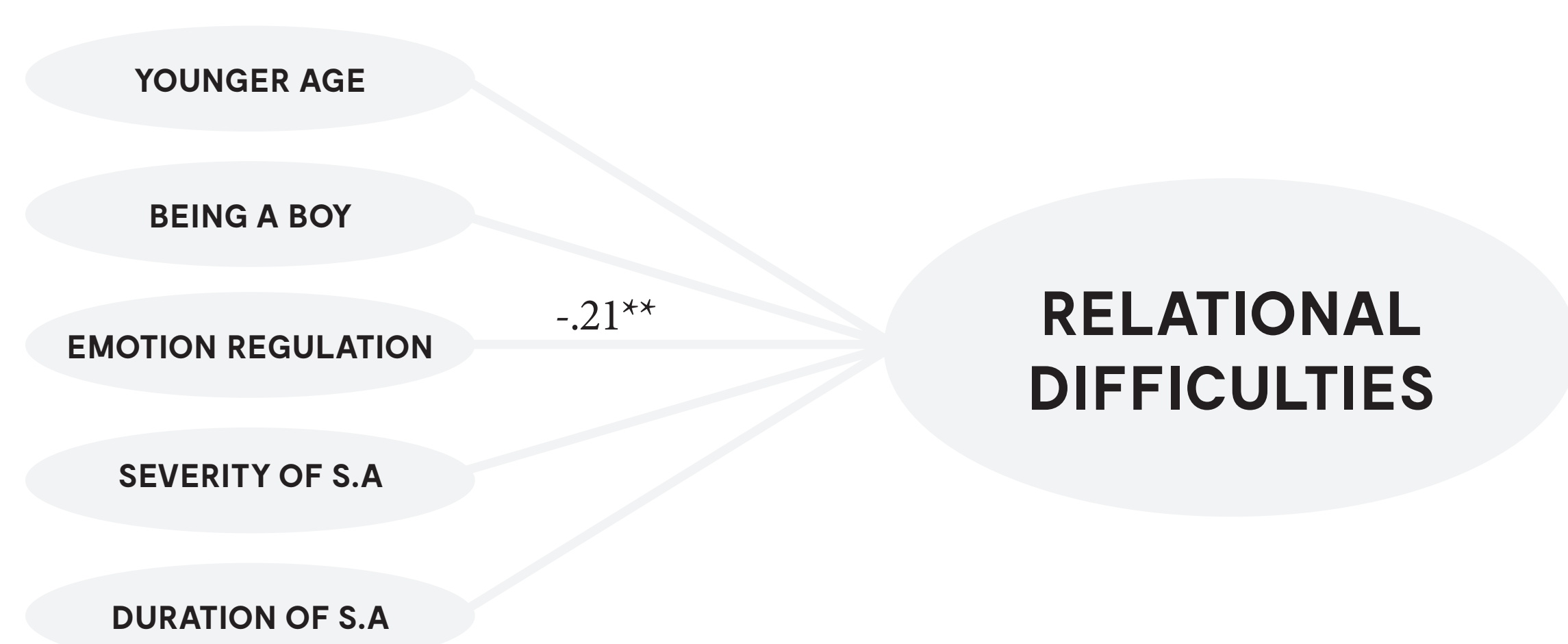
REPRESENTATION OF CLINICAL SYMPTOMS



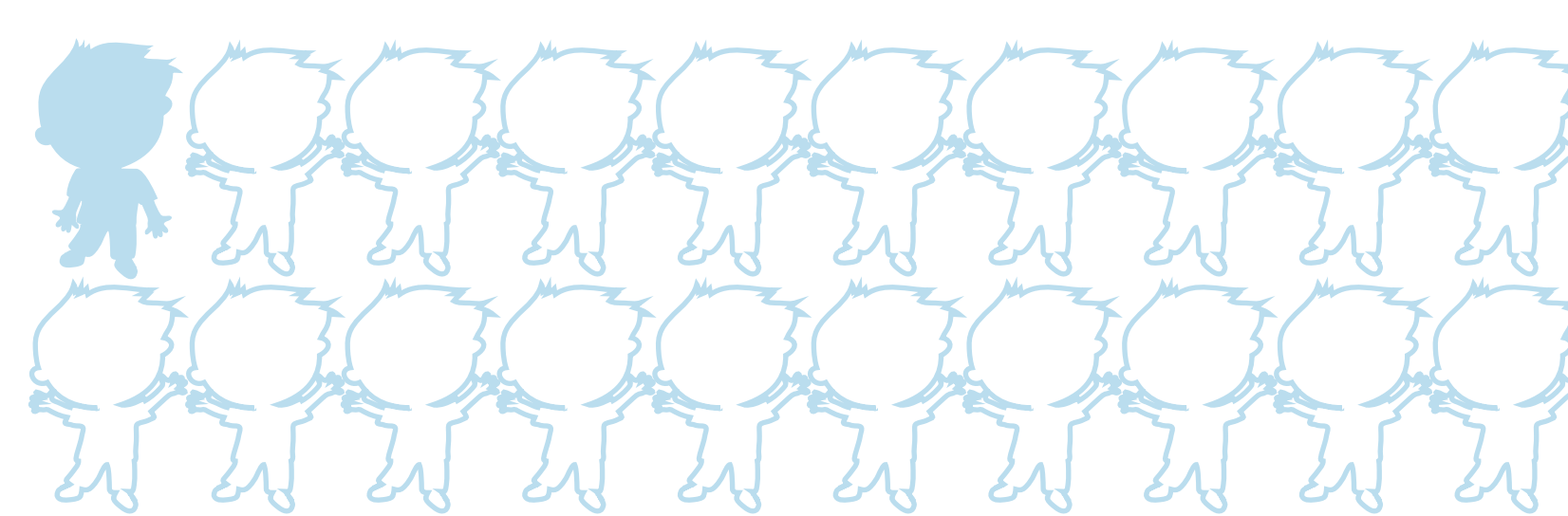
NON-ABUSED : 3/25



VICTIMS : 4/5



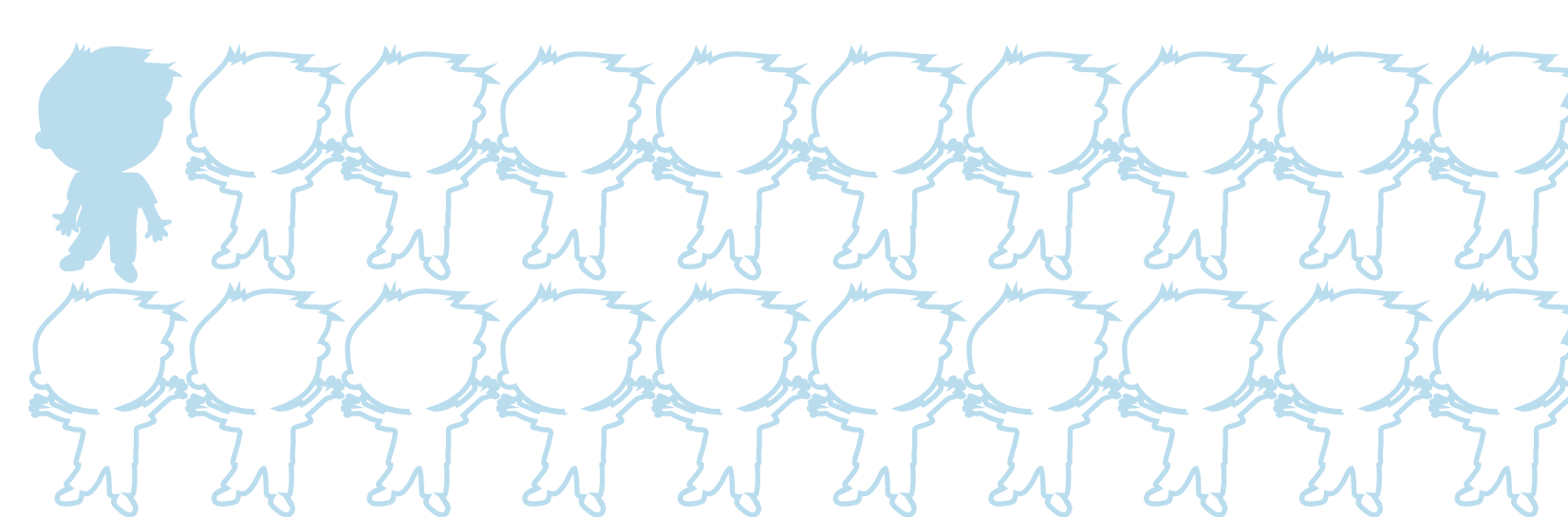
NON-ABUSED : 1/20



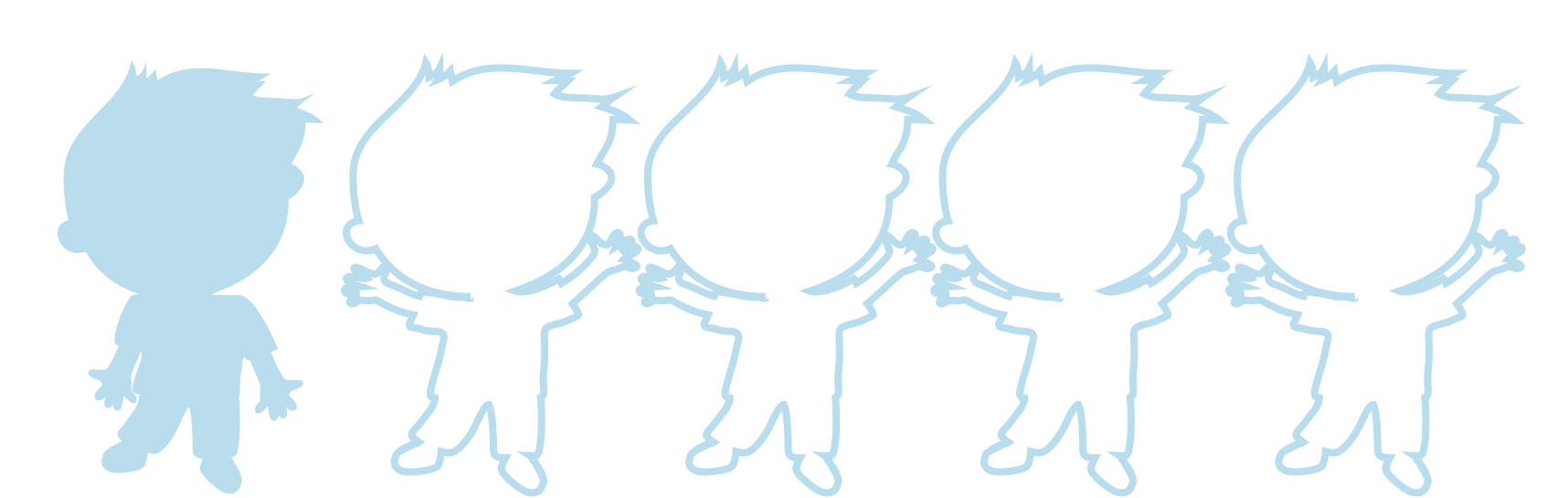
VICTIMS : 4/5



NON-ABUSED : 1/20



VICTIMS : 1/5



$p < .01^{**}$
 $p < .05^*$

CONCLUSION

Child Sexual Abuse

- +** Emotional Liability
- Emotion regulation capacities
- +** Externalised Behaviors

